

## New for 2011:

### Precision Modular Window Cutter

The lightweight pneumatically powered cutter has been specifically designed to quickly and safely make both longitudinal and circumferential cuts in Ductile Iron and Steel pipe, consequently allowing a window to be cut from the pipe wall to gain access to a previously inserted pipe.



Cutter Module (1) Showing Depth Gauge

The cutter is suitable for pipe sizes from 4" diameter and with a wall thickness up to 0.787 inches. The standard unit will make longitudinal cuts up to 10 inches (longer units are available).

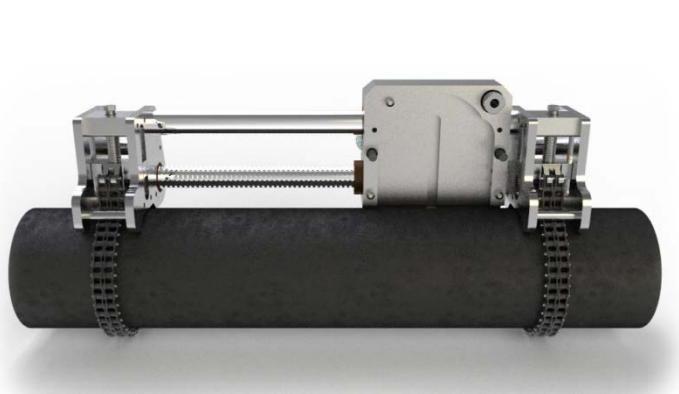
### **MAJOR and SAFETY FEATURES**

- Cuts Ductile Iron & Steel pipes + other materials.
- Suitable for ALL pipes from 4" diameter with a wall thickness up to 0.787"
- Accuracy of cut controlled with a digital depth gauge.
- Fast – about 30 minutes to cut a complete window.
- Cold Cutting – No sparks
- Fully enclosed blade.
- Air supply controlled by “dead-mans” handle.
- Small – Only 5 ½" clearance required around pipe.
- Lightweight – easy to set up and operate.
- Pneumatically operated from a standard site compressor (32cfm).
- No additional lubrication required.
- Optional Ultrasonic meter available.

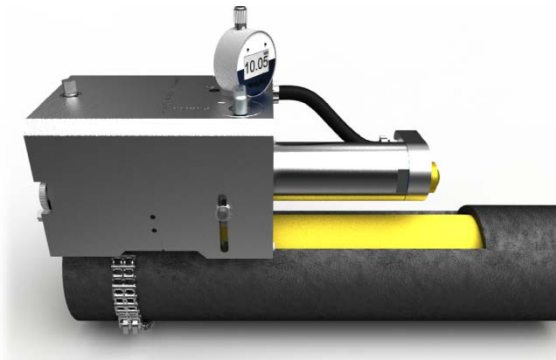
Circumferential Module (2)



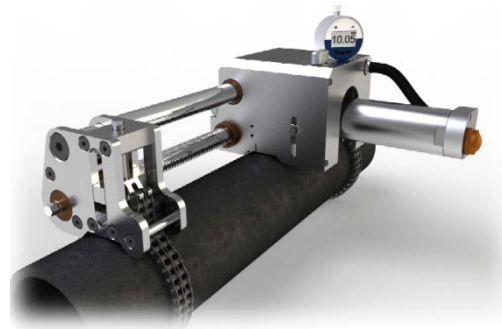
Longitudinal Module (3)



Circumferential Cutting Mode Using Module 1 & 2



Longitudinal Cutting Mode Using Module 1 & 3



## SPECIFICATION

Pipe Material	Cast Iron, Ductile Iron, Steel & Plastic
Pipe Diameter (Nominal O.D.)	The cutter is suitable for pipe sizes from 4" diameter with a maximum wall thickness up to 0.787". The standard unit makes longitudinal
Control of Cut	Accurately controlled using the digital depth gauge attached to the cutter module in doing so avoiding possible damage to the inserted pipe.
Cutting Speed	A window can be cut in any specified pipe material in approximately 30 minutes.
Pipe Clearance	ONLY 5 1/2" of clearance is required to make a circumferential cut.
Unit Dimensions	Longitudinal – 20" long x 12 3/4" wide x 5 1/2" high (without depth gauge) Circumferential – 14" long x 5 1/2" wide x 5 1/2" high.
Weight	Longitudinal Module – 28lbs Circumferential – 20lbs
Air Consumption	32 cfm at pressures up to 7 bar (101psi)
Lubrication	Unit supplied complete with an air filter/lubricator
Blade Type	Customized High Speed Steel